

harman/kardon®



guide + play™ GPS-510

Portable Touchscreen Navigation System and A/V Media Player
Système de navigation portable à écran tactile et lecteur multimédia A/V
Sistema portátil de navegación con pantalla táctil y reproductor media A/V

Quick-Start Guide
Guide de démarrage rapide
Guía de inicio rápido

Contents

English Instructions	3
Instructions Françaises	13
Instrucciones Españolas.....	24



The Harman Kardon® GPS-510 uses a lithium-polymer battery. Under normal operating conditions, the battery will provide superior service with a lifespan that is superior to those of other battery types. Please observe the following guidelines to protect the performance of your GPS-510 and its battery:

Do not operate the unit in ambient temperatures outside the following range: -10° C (14° F) to 55° C (131° F).

Do not store the unit even for short periods in ambient temperatures outside the following range: -20° C (-4° F) to 60° C (140° F).

Do not store the unit for long periods in ambient temperatures outside the following range: 0° C (32° F) to 25° C (77° F).

The GPS-510 will not charge the battery at temperatures above 50° C (122° F).

Le Harman Kardon® GPS-510 utilise une pile au lithium-polymère. Dans des conditions d'utilisation normales, la pile offre une durée de vie et un rendement supérieurs à celui des autres types de piles. Veuillez observer les lignes directrices ci-dessous pour optimiser le rendement de votre GPS-510 et de sa pile:

Ne pas faire fonctionner l'unité à une température inférieure à -10° C (14° F) ou supérieure à 55° C (131° F).

Ne pas ranger l'unité, même pour une courte période de temps, dans un endroit où la température ambiante est inférieure à -20° C (-4° F) ou supérieure à 60° C (140° F).

Ne pas ranger l'unité pendant une longue période de temps dans un endroit où la température ambiante est inférieure à 0° C (32° F) ou supérieure à 25° C (77° F).

La pile du GPS-510 ne se charge pas lorsque la température ambiante est supérieure à 50° C (122° F).

El GPS-510 de Harman Kardon® usa una batería de litio-polímero. Bajo condiciones normales de operación, la batería le brindará un servicio superior y una vida útil mucho más prolongada que cualquiera de los otros tipos de baterías. Siga las directrices siguientes para proteger el desempeño de su GPS-510 y de su batería:

No utilice la unidad en entornos cuya temperatura está fuera de la gama siguiente: -10° C (14° F) a 55° C (131° F).

No guarde la unidad en entornos cuya temperatura está fuera de la gama siguiente aún por periodos muy cortos: -20° C (-4° F) a 60° C (140° F).

No almacene la unidad por periodos prolongados en entornos cuya temperatura está fuera de la gama siguiente: 0° C (32° F) a 25° C (77° F).

El GPS-510 no cargará la batería en temperaturas arriba de 50° C (122° F).

harman/kardon®

www.guideandplay.com

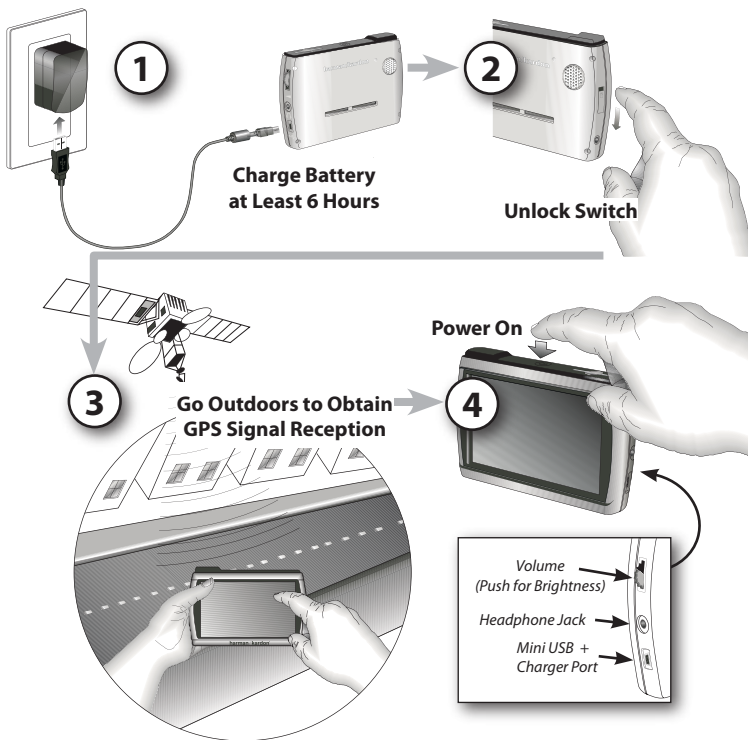
What's in the Box

GPS-510
Car Charger
Wall Charger
USB Cable
Traffic Antenna
Fold-Flat Mounting Bracket
Plastic Disc for Dash-Mount
Adhesive Pad for Plastic Disc
Alcohol Cleaning Pad for Dash Surface
Quick-Start Guide
Carrying Case



ENGLISH

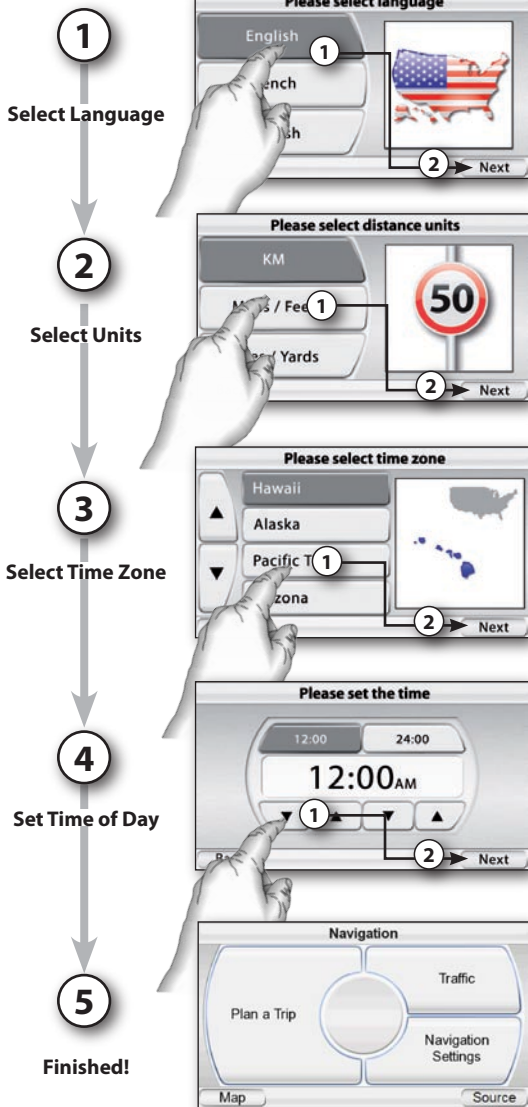
Before You Begin



WARNING: Operation of any feature of this device while driving is dangerous. Do not operate this device while driving. Do not view or operate audio or video modes while driving.

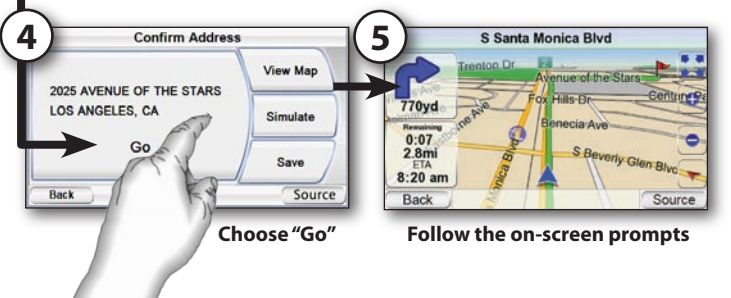
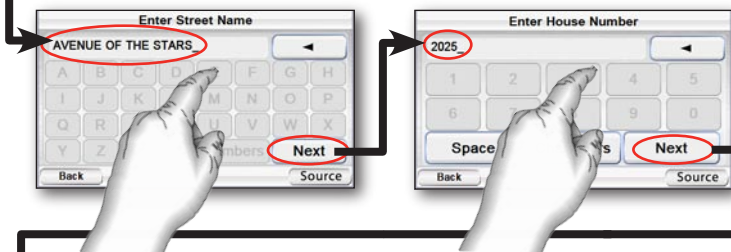
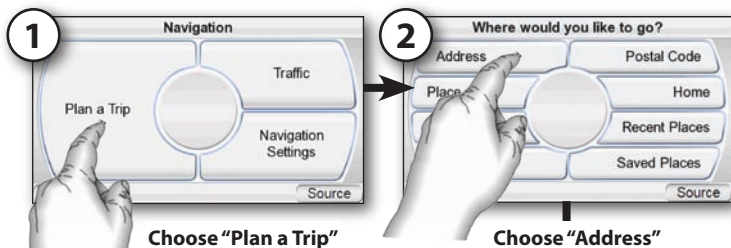
For safety reasons, this device will cease navigation functions when the video mode is enabled. Do not attempt to disable any safety function incorporated in this device. Any alteration of this device may cause serious injury and shall void the warranty.

Setup Wizard



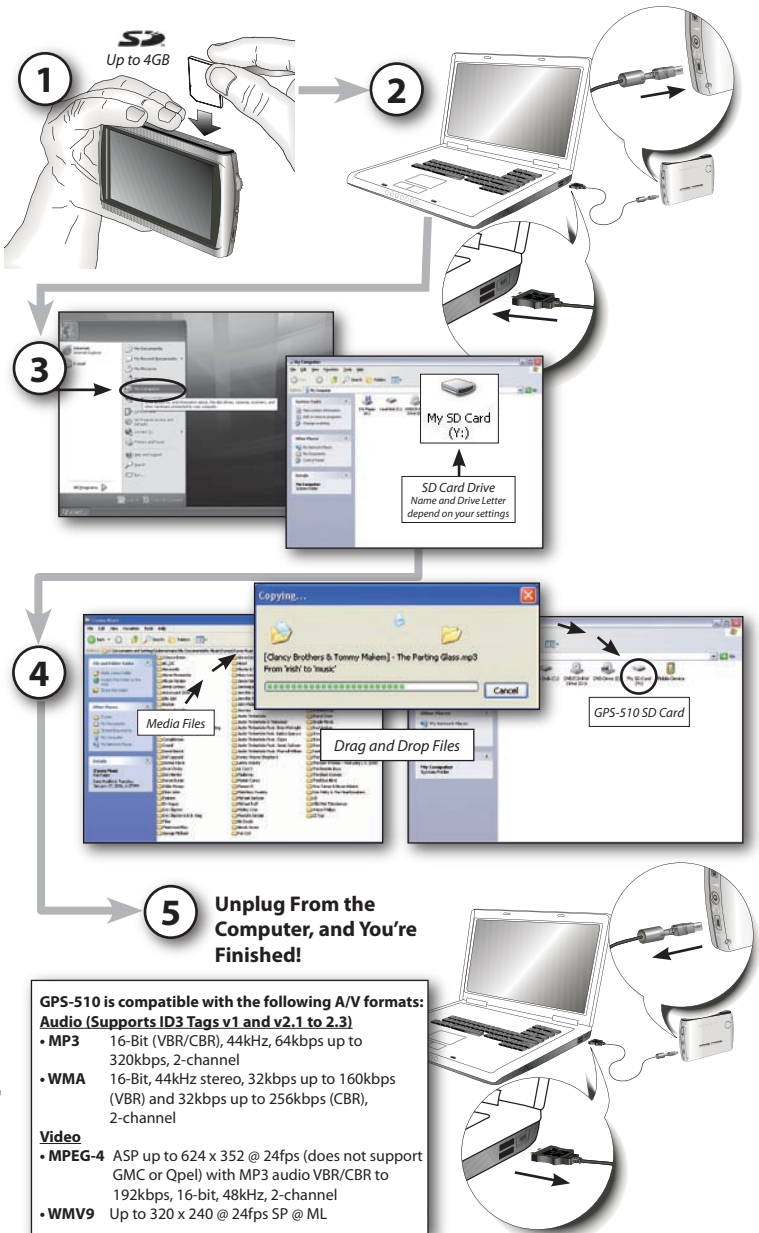
The geographic information provided by this device serves as a navigational aid only and does not include information pertaining to construction, road closures, speed restrictions, road or traffic conditions, or other circumstances relevant to public safety. The driver must always be aware of the actual road conditions and surroundings, and decide whether or not to follow the information provided by this device. Obey all traffic laws and observe safe driving practices. The manufacturer does not accept responsibility for any inaccurate or incomplete information provided by this device.

Plan a Trip



Loading Media Files*

* An **SD Memory Card** (up to 4GB) is required for storage of audio and video files. This is **not included** with the unit and must be purchased separately.



GPS-510 is compatible with the following A/V formats:

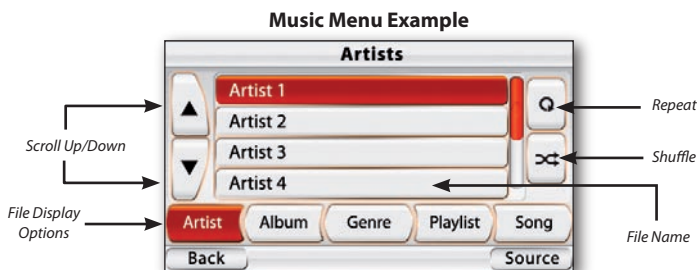
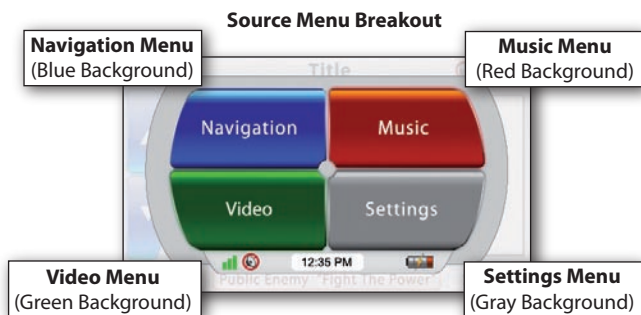
Audio (Supports ID3 Tags v1 and v2.1 to 2.3)

- **MP3** 16-Bit (VBR/CBR), 44kHz, 64kbps up to 320kbps, 2-channel
- **WMA** 16-Bit, 44kHz stereo, 32kbps up to 160kbps (VBR) and 32kbps up to 256kbps (CBR), 2-channel

Video

- **MPEG-4** ASP up to 624 x 352 @ 24fps (does not support GMC or Qpel) with MP3 audio VBR/CBR to 192kbps, 16-bit, 48kHz, 2-channel
- **WMV9** Up to 320 x 240 @ 24fps SP @ ML

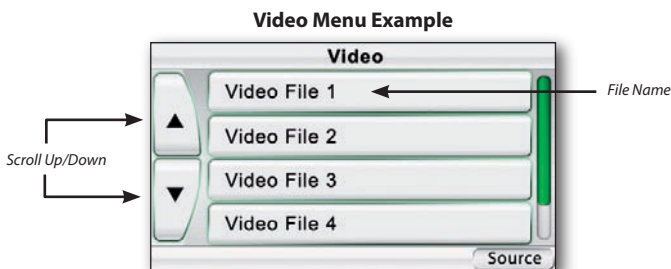
Using the Multimedia Player



Choosing **"Music"** from the source menu brings up the "Artists" screen. You can navigate music by Artist, Album, Genre, Playlist or Song, using the appropriate button.



For safety reasons, this device will cease navigation functions when the video mode is enabled. Do not attempt to disable any safety function incorporated in this device. Any alteration of this device may cause serious injury and shall void the warranty.



Choosing **"Video"** from the source menu brings up the "Video" screen. You can view all the video files stored on the SD card and select one to view by pressing that file name.

In-Vehicle Installation



Do not install this device in any manner that impairs the safe operation of the vehicle. Do not install this device on any airbag panels or in the deployment field of any airbags. Do not place the device on the vehicle's dashboard unsecured. Failure to observe the installation or usage instructions may result in traffic accidents or personal injury.

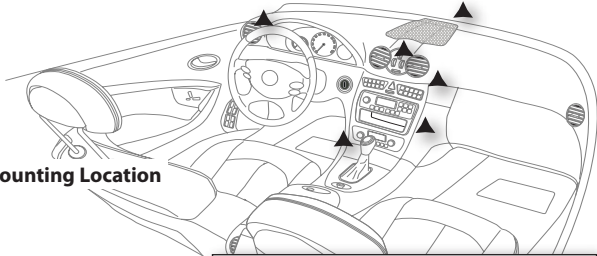


The installation of this device on the windshield, between the driver and the windshield, or otherwise in any manner that obstructs the driver's clear view of the road or traffic conditions is dangerous and may be prohibited by law. State laws in California and Minnesota (and possibly other states) prohibit the mounting of this device on the windshield, in which case other mounting methods should be used. Check your state and local laws before mounting.

Mounting the Unit

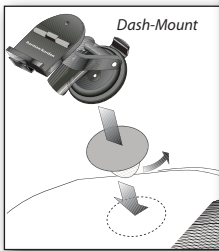
1

▲ Select Mounting Location

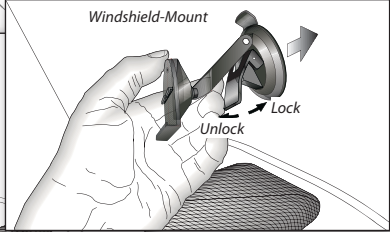


2

Install Mounting Base



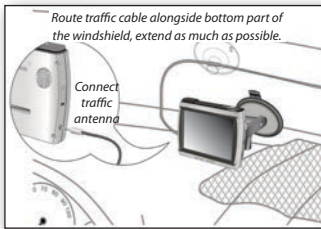
Windshield-Mount



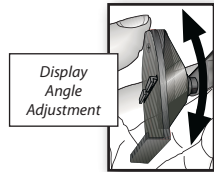
Clean dash with supplied alcohol pad.

3

Connect Traffic Antenna

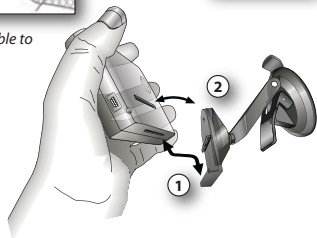


Installation of traffic antenna cable to receive traffic information



4

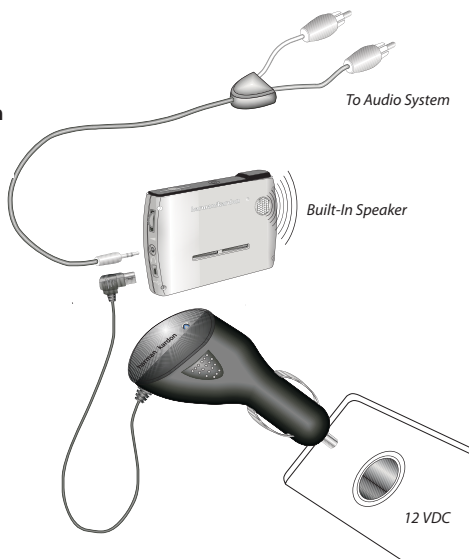
Install GPS-510 in Mounting Base



Listening to Audio (Car)

1
Connect to Audio System
or
Use Built-In Speaker

2
Plug In for Charging
When Needed



Listening to Audio (Personal)

1
Connect Headphones or
Ear Buds

2
Or Use the Built-In
Speaker



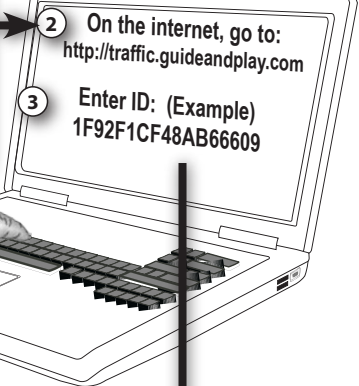
Note: Headphone/line output may also be connected to the line/aux input of an audio device



The installation and use suggestions provided by the manufacturer may be subject to restrictions or limitations by federal, state or local laws. The user should determine whether the installation and use of this device is governed by any law prior to installation or use. For more information, please consult the user's manual online at <http://www.guideandplay.com>.

Activate Traffic Service

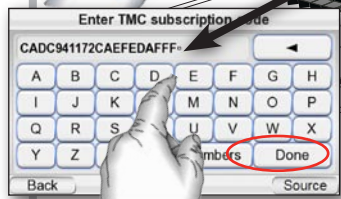
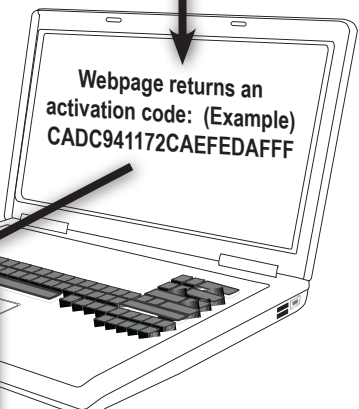
1
Choose "Traffic"



2
Visit activation website. Follow on-screen instructions.

3
Enter GPS-510 ID number into the website

4
Press "Activate" on GPS-510



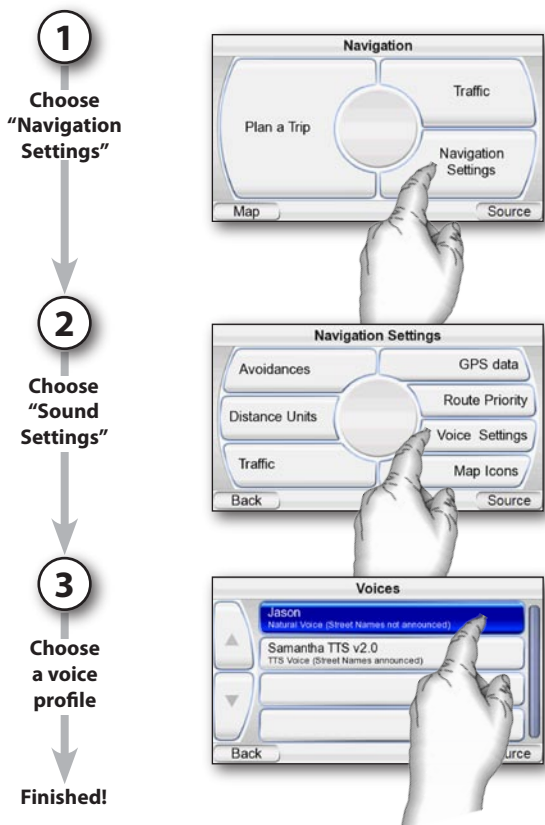
5
Enter Activation Code from Web Page, then press "Done"



Finished!

Text to Speech Feature

GPS-510 has a feature called "Text to Speech" in which navigation prompts that appear on the screen as text can be configured to be spoken in one of several voices (male or female). You can choose to have only directions announced or both directions and street names. For example, the voice would say: "In 500 feet, turn left on Lincoln Blvd."



Troubleshooting

Problem/Symptom	Possible Solution
Unit does not turn on at all	Charge battery, check UNLOCK switch
Unit does not have a good GPS signal	Make sure unit has a clear and unobstructed view of the sky
Unit does not have songs/movies	Requires loading to SD card
Computer sees unit as "MTP Device"	Change preference in "Settings" menu
Screen is too bright or too dim	Adjust in "Settings" menu or press rotary wheel on the right side
Volume is too low for navigation prompts	Adjust volume using rotary wheel on the right side or adjust volume of navigation prompts in Volume Mixer (Settings Menu)
Output level is low or distorted when listening to headphones or when using the line output	Increase media player volume in Volume Mixer (Settings Menu)
Suction cup mount is loose	Reposition with moderate force
Screen is loose on mount	Make sure it is securely "clicked" into place on both the bottom and back
Unit is unresponsive, won't power off	Using a paper clip, press the reset button on the right side of the bottom panel
Unit does not show traffic information	Check antenna connection. Activate service.

This Class B digital apparatus complies with Canadian ICES-003.

Cet appareil numérique de la classe B est conforme à la norme NMB-003 du Canada.

For customer and technical support, call

516.255.4545 (USA only).

Download the complete GPS-510 User's Manual at

www.guideandplay.com.

harman/kardon®

guide + play™

250 Crossways Park Drive, Woodbury, New York 11797
www.harmankardon.com

©2007 Harman International Industries, Incorporated. All rights reserved.

Harman Kardon is a trademark of Harman International Industries, Incorporated, registered in the United States and/or other countries. Guide + Play is a trademark of Harman International Industries, Incorporated.

Part No. 950-0218-001

H A Harman International Company



Please Recycle